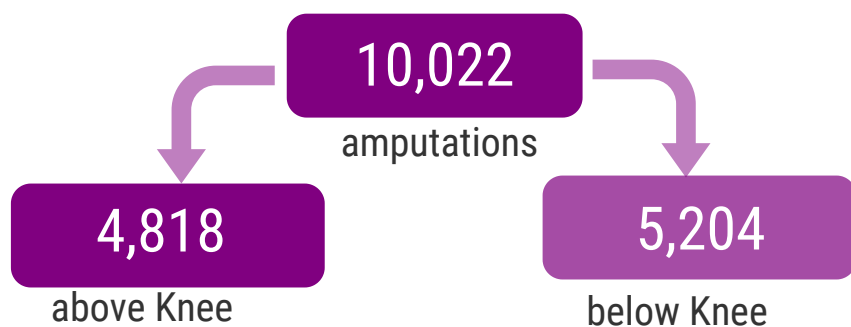


# Lower limb major amputation for peripheral arterial disease

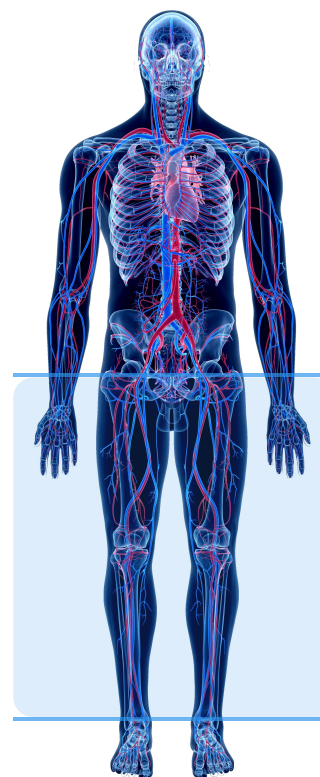
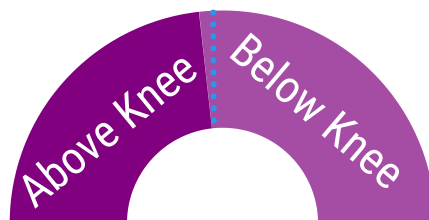
Peripheral arterial disease (PAD) is a restriction of the blood flow in the lower limb arteries that can severely affect a patient's quality of life, and risk their limb.

PAD can gradually progress in some patients and an operation to improve blood flow may no longer be possible. In these situations, people will require amputation of the lower limb.

In 2017-2019 there were 10,022 major lower limb amputations submitted to the NVR.



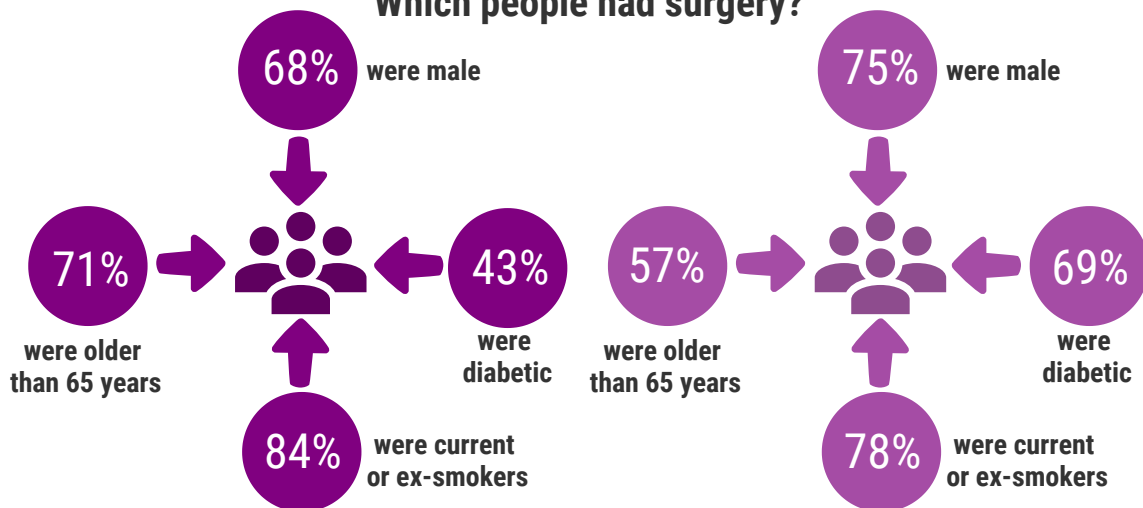
Hospitals should aim to have an above knee amputation to below knee amputation ratio below 1. In 2017-2019, the national ratio was 0.93, but it varied greatly across the country. 27 hospitals had a ratio above 1, and of these, 10 were above 1.5.



## Glossary

The average is the median; "typical range" is the interquartile range.

## Which people had surgery?



## Patient outcomes after surgery

